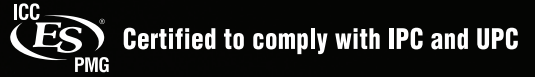


DH 5.0 Pipes & Fittings

*DWV Compression Fitting, Not For Pressure



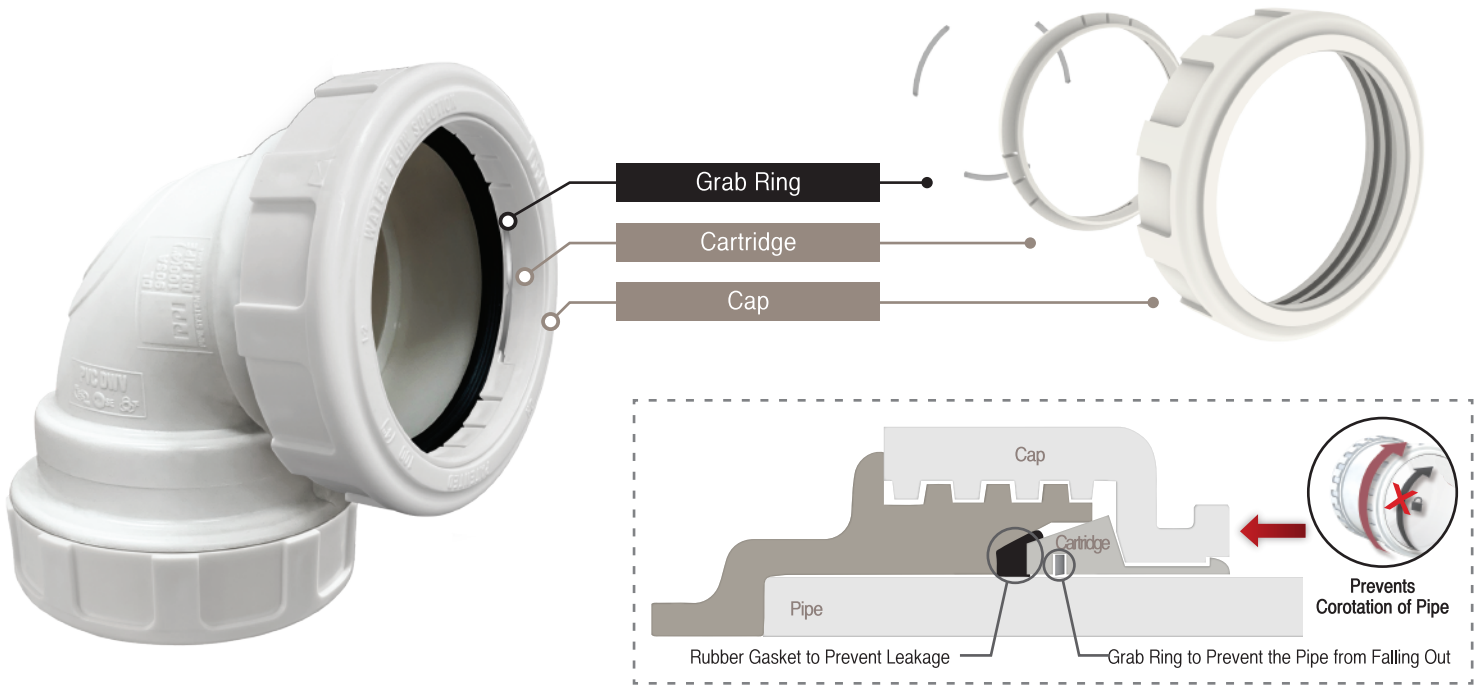
Lotte World Tower (Korea)
World's 5th highest building (123F, 1,821ft)



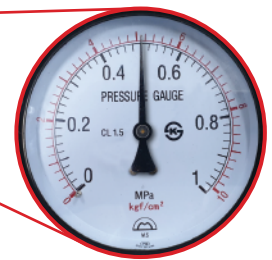
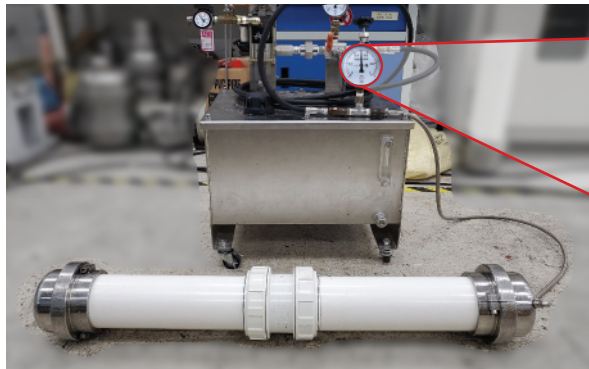
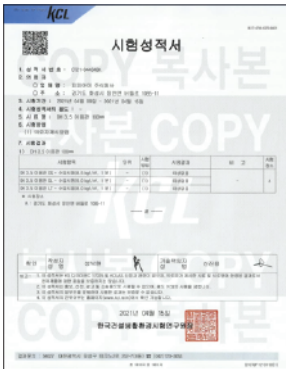
For Drainage, Waste & Vent
For High-rise Residential and
Commercial Buildings

Available Sizes : 2, 3 & 4"

Glab Ring Prevents the Pipe from Falling Out and Leakage

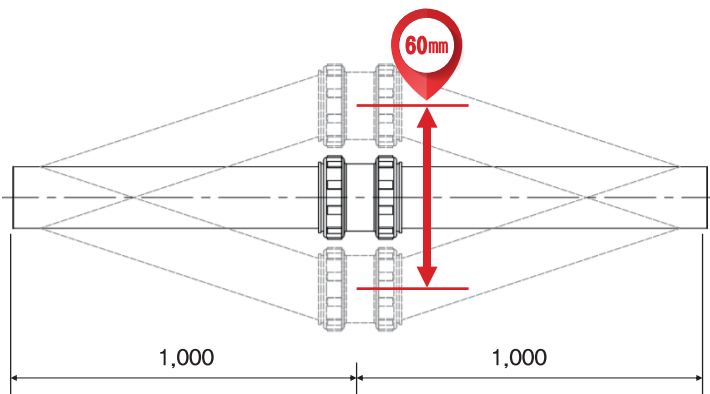


Passed Hydraulic Pressure Test at 70 psi / 1 min



0.5kgf/cm² = 70 psi

Passed the Repeated Bending Test



■ Test Conditions : Displacement 60 mm, 60 cycles / 1 min at Hydraulic Pressure 15 psi

